



# Northern Inland Businesses Are Doing It Tough Due To COVID-19

35% of businesses are experiencing international supply chain issues with imports of intermediary goods and exports

Three out of four businesses said they would have fared better through this pandemic if they had not already suffered through the drought and bushfires

*Almost 50% of businesses have lost over 50% of their income compared to last quarter*

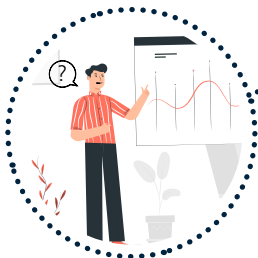
67% of businesses do not have enough income to cover their operating costs

58% of businesses would be doing much better

87% of businesses have been affected by a moderate amount or more  
50% reported a great deal of impact

Businesses are covering the shortfall of income by:

1. Reducing operating costs
2. Reducing personal expenditure
3. Federal Government assistance
4. Reducing staff numbers
5. State Government assistance
6. Delaying loan or other debt payments



# But They Are RESILIENT



36% of businesses say trading is tough but they are adapting

16% say they are doing OK

31% are doing badly but are hanging on

17% say they can't operate

Only 16% of businesses have asked their staff to use their leave balances, a sign of the community working together.

3 most helpful Government support programs:

1. JobKeeper
2. ATO Support
3. Boosting Cash Flow for Employers

Of the businesses that closed their premises:

60% were due to Government restrictions

32% did so for their safety (including staff, family and customers)

5% were not receiving enough sales



Partnerships and Sole Traders are also doing it tough:

88% have been impacted by a moderate amount or more

81% are not covering their operating costs

69% have reduced personal expenditure

65% have reduced operating costs

However only 56% will be using Federal Government assistance

